

## Information Services

# Blackboard: Using Blackboard with Internet Explorer 8

Blackboard specifies IE 8 as “compatible”, but not “certified” – meaning it should work in key areas, but not all. The main issue that has been reported by users is that Internet Explorer 8 is causing problems with timed tests where the timer covers up the **Save** and **Submit** button. If IE 8 is your browser of choice then to avoid this and other unforeseen problems with Internet Explorer 8 we recommend turning on compatibility view whenever you are viewing your courses within Blackboard.

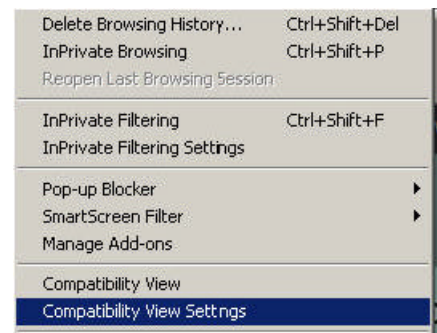
This compatibility mode rolls IE 8 back to IE 7 viewing capability, which ensures you’re seeing all of the content provided. Those using IE 7, which is Blackboard certified, should not experience issues.

### Turning on Compatibility View in Internet Explorer 8.

**Please note:** The page may refresh so do this **BEFORE** you enter a test otherwise you are likely to be kicked out of the test.

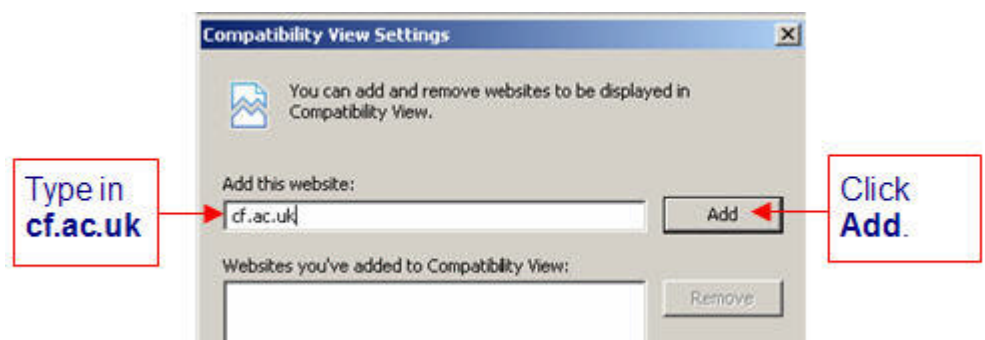
With Internet Explorer 8 open click on **Tools** in the Main menu.

Select **Compatibility View Settings**.



In the **Add this website** box type **cf.ac.uk**. Click **Add**. You will see that the website will be added to the box below.

Click **Close**.



This will turn on compatibility view for Blackboard and other sites ending in cf.ac.uk.

**Please note:** The settings are remembered the next time you visit the site on the same PC. If you are using multiple PCs and IE8 you will need to perform the same procedure for each

*October 2009 / SW*

---

For further help or information contact the Information Services helpdesk - Tel: 029 2087 4487.  
Email: [insrvConnect@cardiff.ac.uk](mailto:insrvConnect@cardiff.ac.uk). Web: [www.cf.ac.uk/insrv/help](http://www.cf.ac.uk/insrv/help)